

Fellowship Christian Academy Preschool

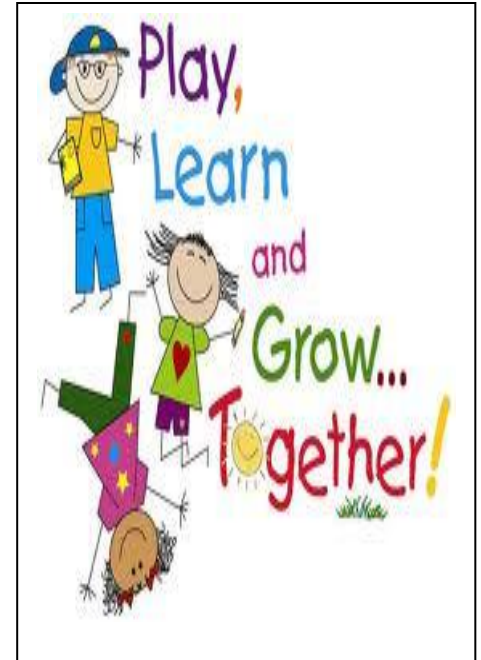
August 29, 2011

Anita Waters, Preschool Supervisor

Director's News

By now, your child has adjusted to the preschool environment. We have spent the last two weeks teaching them the routines of the preschool day. They have been learning and adjusting to their daily schedule of plans and activities, getting to know new friends, and having a good time learning.

Our chapel day will begin soon and we want everyone in the practice of dressing in their chapel dress code. This is a reminder that your children should dress for chapel every Monday. There is no need to wear a sweater until late September or the beginning of October.



Get Involved! Join PTF!

Joining PTF (Parent-Teacher Fellowship) is a great way to get involved in your child's education. If you haven't done so already, we encourage you to complete a PTF form and get involved. The preschool always needs parent support and involvement in order to continue offering the excellent program and experiences we have had through the years.



Reminders

- Parents sign in and out daily in your child's classroom
- Take blankets and pillows home on Friday to wash them and return them on Monday!

Dates to Remember:

September 5 – Labor Day-No School

September 6-9 – Fall Portraits (schedule below):

Tues. Sept 6.	Toddlers
Wed. Sept. 7	Two year olds
Thurs. Sept. 8	Three year olds
Friday Sept. 9	Four year olds

Fellowship Christian Academy Preschool

Uniform Reminder

Preschool Girls

Monday only (Chapel Day):
White Peter Pan collar blouse with logo and Navy Jumper

Tuesday-Friday:
Tops: White or Burgundy polo with logo
Bottoms: Navy pants, shorts, jumpers, skorts or skirts

Friday option:
FCA spirit shirt with blue jeans

Shoes:
Black and White or Blue and White Saddle Oxfords
Solid black or blue shoes
Tennis shoes-Tuesday-Friday only



Preschool Boys

Monday only (Chapel Day):
White oxford shirt (no logo required)
Navy Pants
Black shoes

Tuesday-Friday:
Tops: White or Burgundy polo with logo
Bottoms: Navy pants or shorts

Friday option:
FCA spirit shirt with blue jeans

Shoes:
Black shoes
Tennis shoes Tuesday –Friday only

Drop Off and Pick Up

Make sure to drop your children off in the morning by 8am and no later than 9am. This allows for an easy transition into school and helps them get the most out of their day. Please avoid dropping off or picking up children between the hours of 11:30am and 2:30pm. It is our lunch and rest time and any drop off and pick up at this time will be a disruption of the classroom. Pick up time is no later than 6:00pm. Should you run late picking up your child, a late charge of \$1 per minute will apply.

For more information and to see other policies go to <http://www.fcasoars.com> and look under Admissions, Student Handbook.